

# Breeding/Foaling Preventative Measures

Prince Edward Island Standardbred Breeders Association

February 11, 2023

Dr. David Best - Charlottetown Veterinary Clinic



**CHARLOTTETOWN**  
**VETERINARY CLINIC**

# Topics

- ▶ Late pregnancy and foaling:
  - ▶ Vaccination and deworming
  - ▶ Preparation for foaling
  - ▶ Foaling process
- ▶ Foal Care:
  - ▶ First 24 hours
  - ▶ Failure of passive transfer
  - ▶ First months
- ▶ Breeding:
  - ▶ The estrous cycle
  - ▶ Manipulating the estrous cycle
  - ▶ Foal heat
  - ▶ Semen
  - ▶ The repeat breeder

# Late Pregnancy and Foaling

# Exercise

- ▶ BCS of 6/9
- ▶ Before 5 months → Normal activity
- ▶ After 5 months → 6hr turnout per day
  - ▶ Weather dependent
- ▶ Regular maintenance



# Vaccination and Deworming

- ▶ Vaccinations:
  - ▶ When to vaccinate
  - ▶ Pneumabort (EHV-1)
  - ▶ Main vaccines
  - ▶ Strangles?
- ▶ Deworming:
  - ▶ Same schedule
  - ▶ Day of foaling?



# Abortion

- ▶ Non-infectious causes:
  - ▶ Twins
  - ▶ Umbilical cord abnormalities
- ▶ Infectious causes:
  - ▶ Bacterial
  - ▶ Viral
  - ▶ Fungal





# Preparation for Foaling

- ▶ Foaling stall
- ▶ Foaling kit
- ▶ Monitoring
- ▶ Dystocia plan



# Foaling Kit

- ▶ Plastic gloves (short and rectal)
- ▶ Vetrap
- ▶ Navel dip
- ▶ Scissors
- ▶ Clamp or cable tie
- ▶ Towel
- ▶ Gauze
- ▶ Clean bucket
- ▶ Soap
- ▶ Stopwatch
- ▶ OB chains or ropes
- ▶ Oxygen
- ▶ Enema
- ▶ Brix refractometer
- ▶ Other



# Foaling Process

- ▶ Handle udder prior to foaling
- ▶ Foal alert
- ▶ Stages of foaling:
  - ▶ Stage 1: Pre-delivery
  - ▶ Stage 2: Delivery
  - ▶ Stage 3: Passing placenta
- ▶ When to call a vet:
  - ▶ Better early than late
  - ▶ While you wait



# Foal Care

# First 24 Hours

- ▶ 1-2-3 Rule
- ▶ Assessment
- ▶ Navel dip
- ▶ Colostrum
- ▶ Normal behaviour



# Failure of Passive Transfer (FPT)

- ▶ Foal not getting adequate colostrum:
  - ▶ Improper nursing
  - ▶ Poor production
  - ▶ Poor quality
  - ▶ Aggressive mare
- ▶ IgG testing:
  - ▶ Best at 8-12hr
- ▶ Plasma transfusion:
  - ▶ After 24hr





# First Months

- ▶ Deworming
- ▶ Vaccinations
- ▶ Exercise
- ▶ Continued assessments



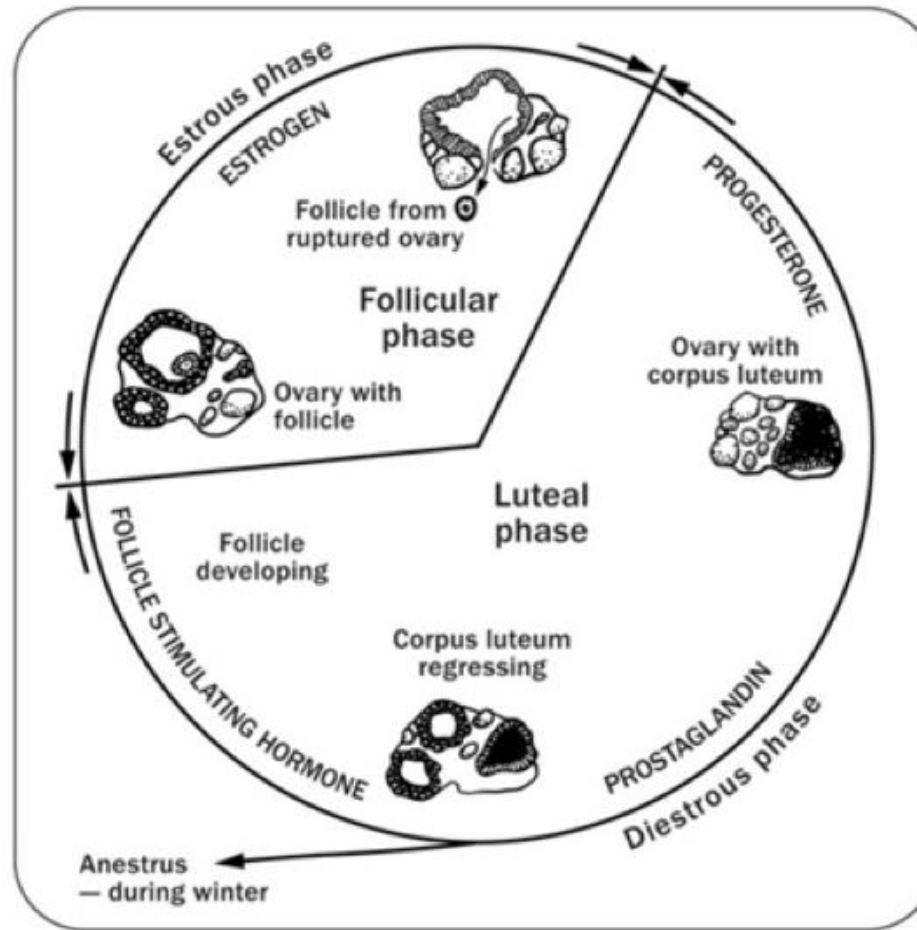
The background features abstract, overlapping geometric shapes in various shades of blue, ranging from light sky blue to deep navy blue. These shapes are primarily located on the left and right sides of the frame, creating a modern, architectural feel. The central area is a plain, light grayish-white.

Breeding



# Estrous Cycle

- ▶ Seasonality
- ▶ 21-day cycle
- ▶ Estrous
- ▶ Diestrous



The Equine Estrous Cycle

# Manipulating the Estrous Cycle

- ▶ Artificial lighting:
  - ▶ When to start
  - ▶ How much light
  - ▶ Coverage
  - ▶ Other options
- ▶ Chemical manipulation:
  - ▶ Lutalyse or Estrumate
  - ▶ Deslorelin or hCG



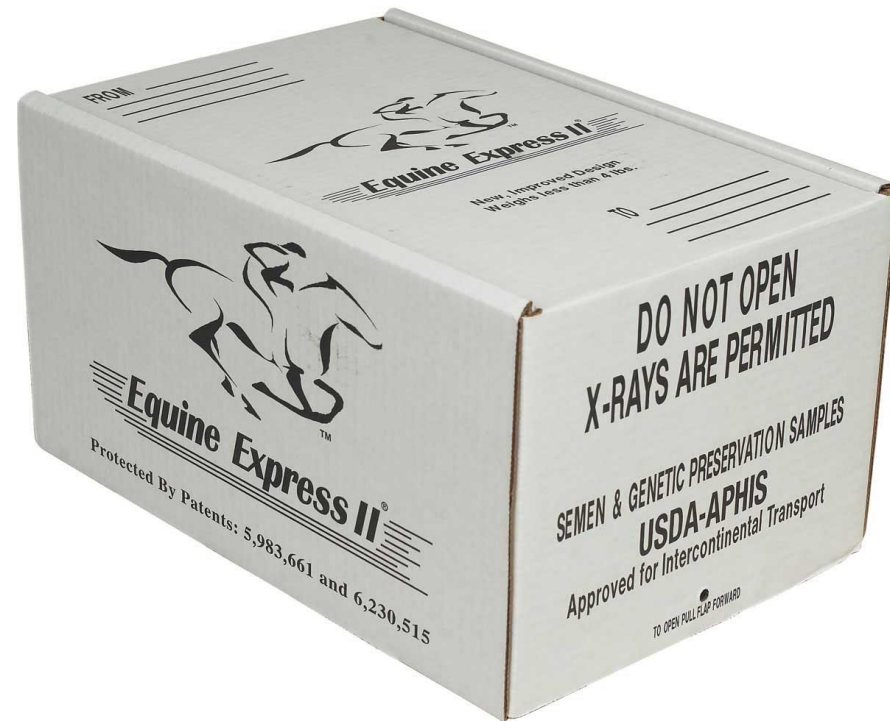
# Foal Heat

- ▶ First heat post foaling
- ▶ Large range
- ▶ Optimal ovulation
- ▶ Exercise



# Semen

- ▶ Fresh
- ▶ Chilled
- ▶ Frozen
- ▶ What's in the box?



# The Repeat Breeder

## ▶ Causes:

- ▶ Uterine fluid
- ▶ Inflammation
- ▶ Semen incompatibility
- ▶ Uterine abnormalities
- ▶ Infection

## ▶ Diagnosis:

- ▶ Reproductive examination
- ▶ Uterine culture
- ▶ Uterine biopsy

## ▶ Treatment:

- ▶ Uterine flushes
- ▶ Uterine infusions
- ▶ Caslicks



# Questions?

